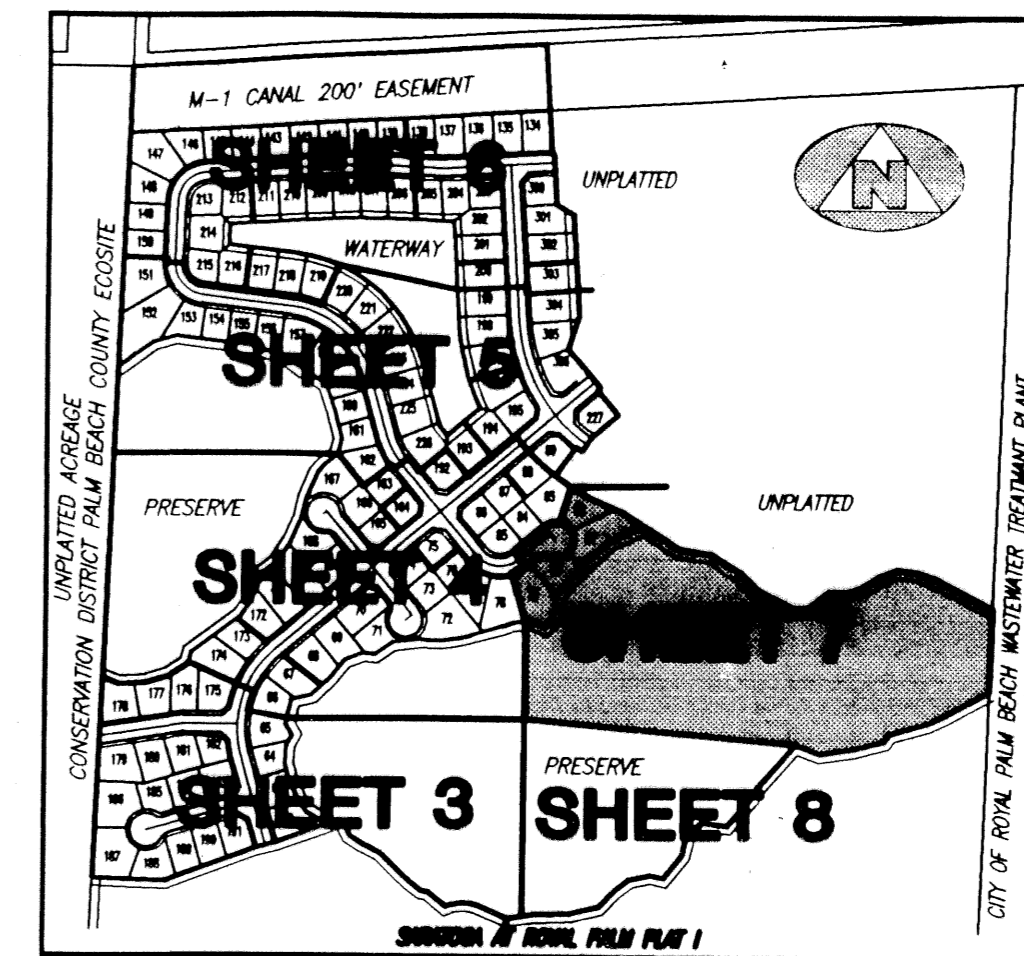
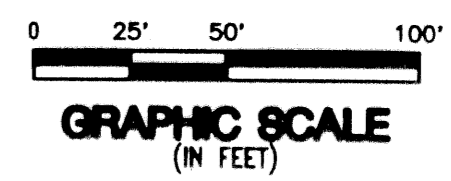
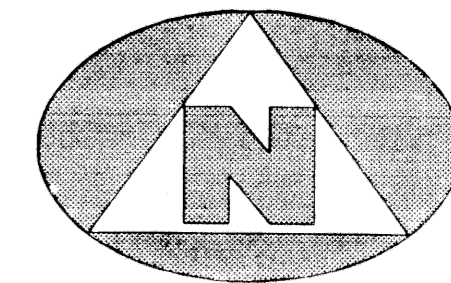


# SARATOGA AT ROYAL PALM PLAT II

(A PART OF ROYAL PALM HOMES P.U.D.)  
LYING AND BEING IN SECTION 15, TOWNSHIP 43 SOUTH, RANGE 41 EAST, VILLAGE OF ROYAL PALM BEACH, PALM BEACH COUNTY, FLORIDA,  
BEING A RE-PLAT OF A PORTION OF HAWTHORN SUBDIVISION, AS RECORDED IN PLAT BOOK 30, PAGE 104, PUBLIC RECORDS, PALM BEACH COUNTY, FLORIDA

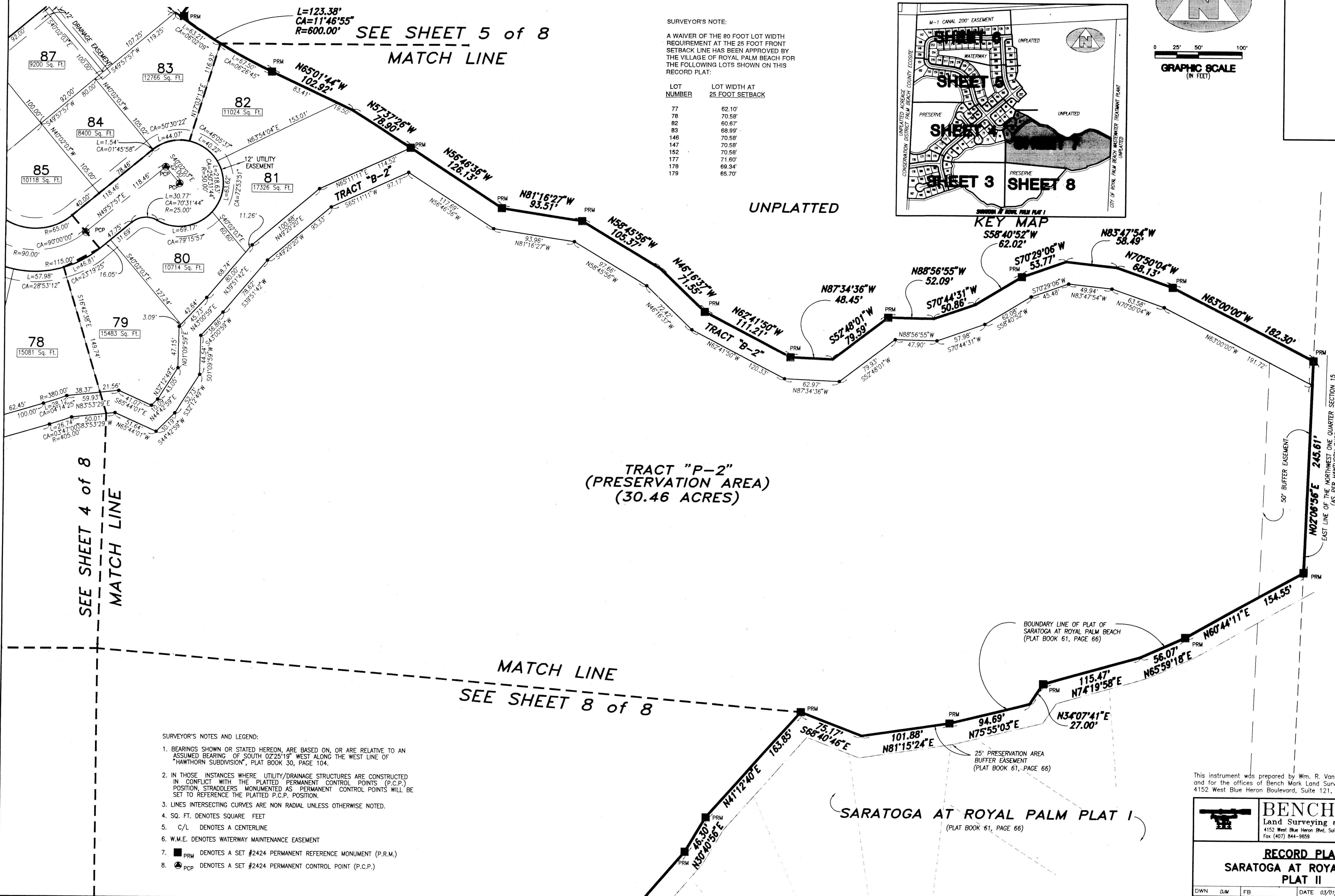


KEY MAP

**SURVEYOR'S NOTE:**

A WAIVER OF THE 80 FOOT LOT WIDTH REQUIREMENT AT THE 25 FOOT FRONT SETBACK LINE HAS BEEN APPROVED BY THE VILLAGE OF ROYAL PALM BEACH FOR THE FOLLOWING LOTS SHOWN ON THIS RECORD PLAT:

| LOT NUMBER | LOT WIDTH AT 25 FOOT SETBACK |
|------------|------------------------------|
| 77         | 62.10'                       |
| 78         | 70.58'                       |
| 82         | 60.67'                       |
| 83         | 68.99'                       |
| 146        | 70.58'                       |
| 147        | 70.58'                       |
| 152        | 70.58'                       |
| 177        | 71.60'                       |
| 178        | 69.34'                       |
| 179        | 65.70'                       |



SEE SHEET 5 of 8  
MATCH LINE

SEE SHEET 4 of 8  
MATCH LINE

TRACT "P-2"  
(PRESERVATION AREA)  
(30.46 ACRES)

MATCH LINE  
SEE SHEET 8 of 8

CITY OF ROYAL PALM BEACH  
WASTE WATER TREATMENT PLANT  
UNPLATTED

**SURVEYOR'S NOTES AND LEGEND:**

- BEARINGS SHOWN OR STATED HEREON, ARE BASED ON, OR ARE RELATIVE TO AN ASSUMED BEARING OF SOUTH 02°25'19" WEST ALONG THE WEST LINE OF "HAWTHORN SUBDIVISION", PLAT BOOK 30, PAGE 104.
- IN THOSE INSTANCES WHERE UTILITY/DRAINAGE STRUCTURES ARE CONSTRUCTED IN CONFLICT WITH THE PLATTED PERMANENT CONTROL POINTS (P.C.P.) POSITION, STRADDLERS MONUMENTED AS PERMANENT CONTROL POINTS WILL BE SET TO REFERENCE THE PLATTED P.C.P. POSITION.
- LINE INTERSECTING CURVES ARE NON RADIAL UNLESS OTHERWISE NOTED.
- SQ. FT. DENOTES SQUARE FEET
- C/L DENOTES A CENTERLINE
- W.M.E. DENOTES WATERWAY MAINTENANCE EASEMENT
- PRM DENOTES A SET #2424 PERMANENT REFERENCE MONUMENT (P.R.M.)
- PCP DENOTES A SET #2424 PERMANENT CONTROL POINT (P.C.P.)

This instrument was prepared by Wm. R. Van Campen, R.L.S., in and for the offices of Bench Mark Land Surveying & Mapping, Inc., 4152 West Blue Heron Boulevard, Suite 121, Riviera Beach, Florida

**BENCH MARK**  
Land Surveying and Mapping, Inc.  
4152 West Blue Heron Blvd., Suite 121, Riviera Beach, FL 33404  
Fax (407) 844-9659 Phone (407) 848-2102

|                    |                  |                                       |               |
|--------------------|------------------|---------------------------------------|---------------|
| <b>RECORD PLAT</b> |                  | <b>SARATOGA AT ROYAL PALM PLAT II</b> |               |
| DWN                | DJM              | FB                                    | DATE 03/01/95 |
| CKD                | FILE P15-R-A.dwg | SCALE 1" = 50'                        | WO.# P15      |
|                    |                  |                                       | SHEET 7 OF 8  |

Saratoga at Royal Palm  
Plat II  
SUBDIVISION # 74  
BOOK 74  
PAGE 153  
FLOOD ZONE  
QUAD #  
SE  
PUD NAME  
ZIP CODE